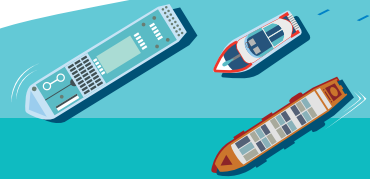
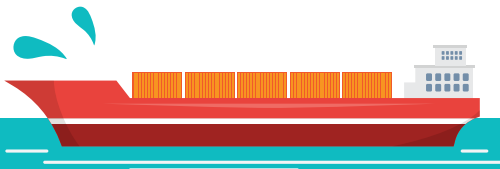


Nabtesco

Nabtesco Marine Asia Pacific Pte Ltd

ROUTINE INSPECTION

ME BRIDGE MANEUVERING SYSTEM
MAIN ENGINE GOVERNOR SYSTEM



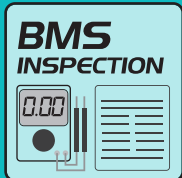
Proper Routine Inspections are recommended to avoid problems before they become real problems. These inspections are vital to check that our equipment are of optimum performance.

Conducting routine inspections by our qualified engineers ensures our system to be at satisfactory condition as well as to advise a foreseen trouble in symptoms state. In this manner customer can have foresight of early trouble indication for an early preparation.

During our Inspection our skilled and qualified engineers will assess our supplied equipment condition based on our standard procedures and checklist which includes:



- Physical equipment checks
- Confirmation of Voltage, Current, Signals , etc
- Function tests
- Parameter and settings confirmations
- Operation checks
- Simulation Tests
- Brief discussion for technical notes and advise to ship staff



Nabtesco Corporation v.100

Inspection List for M-800 III Remote Control System
M-800 III 制御システム 電気制御装置 (リモートコントロール)

| | | | |
|-----------------------------|----------------------|-------------------------|----------------------|
| Customer 船主 | Voyager Shipping Ltd | Name of VESSEL 船名 | VOYAGER ONE |
| Shipyard/HAZ. NO. 船渠番号/船渠番号 | 7515 | Type of M/E 主機機種 | 6S60MC-C |
| Model/Type/Brand 機型/型式/品牌 | 12 ELECTRIC 12 電力式 | Installation type 安裝型式 | MANEUVERING 操車式 |
| RELEVANT DATE 相關日期 | 2008 Nov 12 | Date of inspection 檢查日期 | 2018 Jun 15 |
| PLACE OF INSPECTION 檢查地點 | Singapore Shipyard | Inspected by 檢查員姓名 | ANDREW TSEBENKIN 謝安東 |

| NO. | DESCRIPTION 項目 | UNIT 單位 | Value 數值 | Result 結果 |
|-----|---|-----------------------------|----------|-----------|
| 1 | Checking of voltage for ASD/AC controller | W/H Power Source Unit DC24V | 24.45 V | OK |
| 2 | Checking of voltage for BCP (Bridge Indicator Panel) MCB-1501 | DC24V | 24.27 V | OK |
| 3 | Checking of voltage for W/H TBU (Without wiring control) Terminal Board (M2) MCB-2801 | DC24V | 24.25 V | OK |
| 4 | Checking of voltage for W/H TBU (In case of Wdg control exist) MCB-2801 MCB-2802 | DC24V | 24.25 V | OK |
| 5 | Checking of voltage for Safety circuit | Control circuit | 24.25 V | OK |

Nabtesco 746X4532-51

Inspection Result Report 1/4 点検結果記録簿 1/4

| | | | |
|--------------------------|---------------------------|-----------------------------|-------------|
| Shipowner 船主 | Voyager Shipping Ltd | Name of Vessel 船名 | Voyager One |
| Ship No. 船渠番号 | 1515 | Engine Manufacturer 主機製造商 | MAN B&W |
| Engine Type 主機型式 | 6S60MC-C | Date of Vessel Delivery 竣工日 | 2008 Nov 12 |
| Place of inspection 点検場所 | Singapore Shipyard | Date of inspection 点検日 | 2018 Jun 16 |
| Engine(s) 主機 | All Bn Rasol Tan Cat Base | Customer Signature 船主署名 | [Signature] |

Component 構成設備 MCB-402 MCB-100 MCB-120 MCB-40

| Item 項目 | Control 制御内容 | Calculated Value 計算結果 | Result 測定結果 |
|--|------------------------------|-----------------------|-------------|
| 1.1 Power sources of MCB Line MCB-1501 電源電圧 | Main source AC 100 V | 100 ± 10 V | OK |
| | 110 V DC | 110 ± 11 V | OK |
| | 24 V DC | 24 ± 2.4 V | OK |
| 1.2 Precision of engine speed detection 主機速度検出 | Blockup engine 24 V DC 主機電壓 | +24 ± 4.8 V | OK |
| | Internal source 24 V DC 内部電源 | +24 ± 2.4 V | OK |
| | +5 V DC source 5V 電源 | +5.0 ± 0.5 V | OK |
| | +15 V DC source 15V 電源 | +15 ± 0.8 V | OK |

* 1 : MCB-302 only. MCB-302は未適用。

Consult with Nabtesco Marine Asia Pacific
www.Nabtesco-Marine.com.sg

