

YOUR SAFE JOURNEY BEGINS WITH **Nabtesco**

## SPEED AND RELIABILITY

These are the basic services Nabtesco aims to provide to all its clients. Nabtesco has constantly been at the forefront in developing systems to ensure navigational safety. Since the development of PMS in 1968, Nabtesco has been consistently creating new technology and systems such as its Remote Control and Electronic Engine Control Systems. These new technologies help to maintain safe navigation and precise scheduling for our clients.

### NABTESCO'S MARKET SHARE



**NABCO**  
has been renamed  
**Nabtesco**

Nabtesco has around 60% share of the Japanese market and a 40% share of the global market in remote control systems for 2-stroke marine diesel engines. In addition to its three main bases in Japan, Singapore and the Netherlands, it has set up plants in China and Korea, thus expanding its global service network and its delivery of finely-tuned after-sales services.

### TRAINING

**NMA**

Nabtesco Maritime Academy  
Asia Pacific

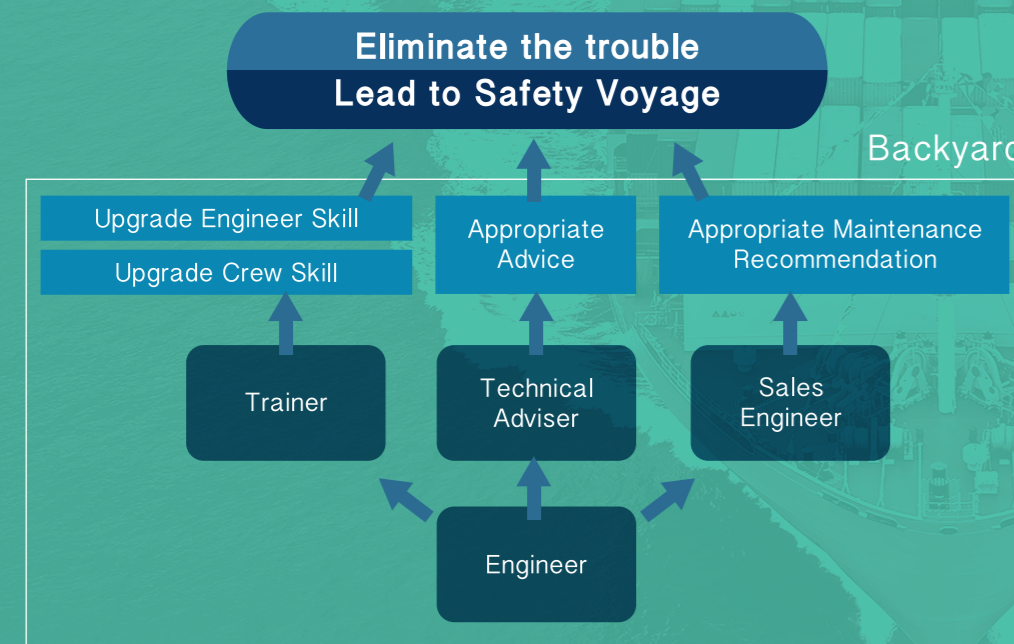
Perspective of No.1 M/E Remote Control System maker, we are able to provide professional training to crew and superintendent and a training facility for professional education are equal at Japan, Korea, Netherlands, Singapore and Philippines.

## SAFE AND SECURE VOYAGE IS OUR PRIORITY

ORGANIZATIONAL CHART IN

### Nabtesco Marine Asia Pacific Pte Ltd

Nabtesco views safety as its highest priority. This is why it works with only the best people. Having a highly skilled and competent workforce that adheres to its detailed Plan of Action ensures that the whole work process is undertaken by only the best in the industry. This is Nabtesco's commitment to its clients. A commitment to Safety.



## Nabtesco Marine Asia Pacific

24/7 AT YOUR SERVICE

### MAIN SERVICE STATION

SINGAPORE

**Nabtesco**  
Marine Asia Pacific

401 Commonwealth Drive #05-04 Haw Par Technocentre Singapore 149598

Phone: +65 6225 6559 FAX: +65 6225 7393

E-mail: [nmap@nabtesco.com.sg](mailto:nmap@nabtesco.com.sg)

<http://www.nabtesco-marine.com.sg>

THE NETHERLANDS

**Nabtesco Marine Europe B.V.**

Touwslagerstraat 17, 2984 AW Ridderkerk The Netherlands

Phone: +31 180 530 590 FAX: +31 180 530 591

E-mail: [technical@nabtesco.nl](mailto:technical@nabtesco.nl)

JAPAN

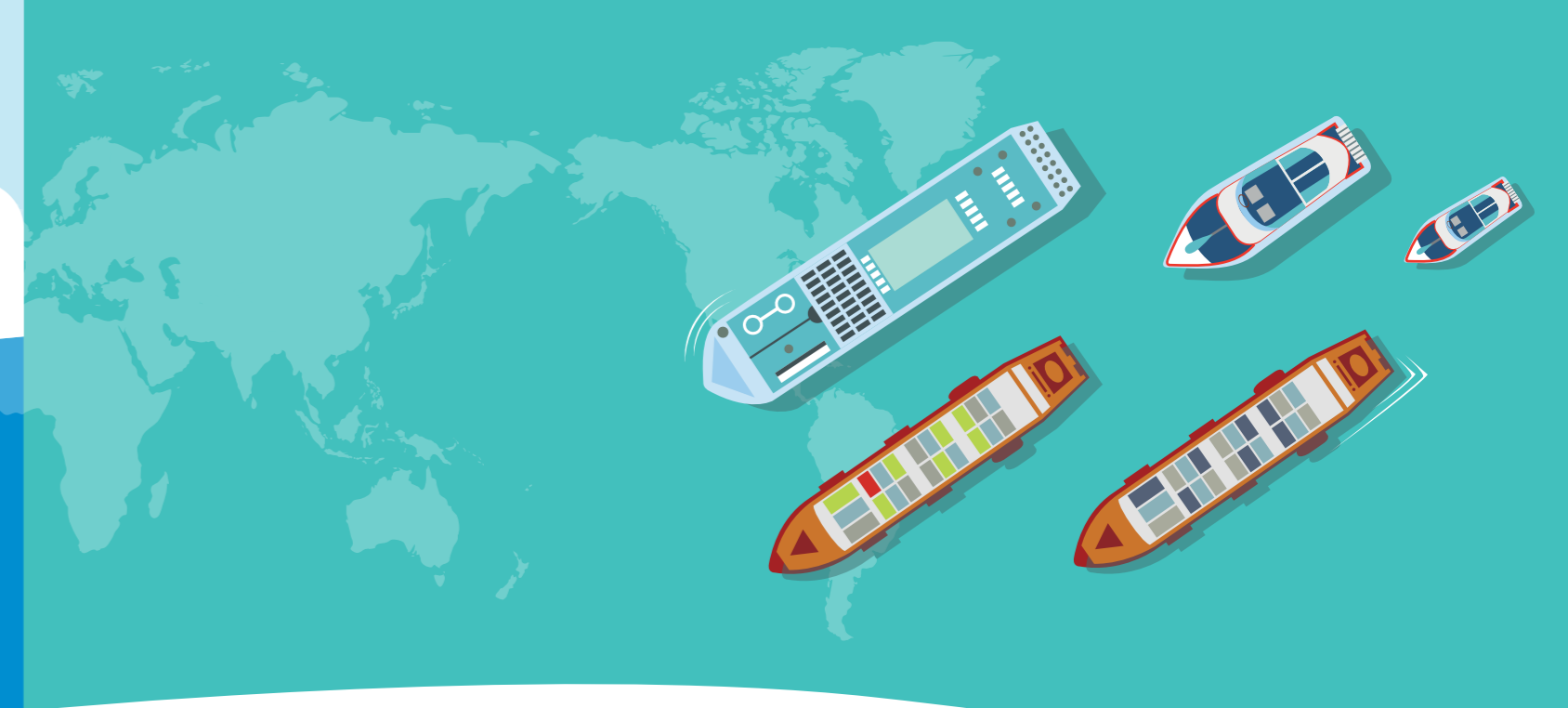
**Nabtesco Corporation** Marine Control Systems Company

1617-1, Fukuyoshi-dai, 1-chome, Nishi-ku, Kobe 651-2413, Japan

Phone: +81 78 967 1404 FAX: +81 78 967 4891

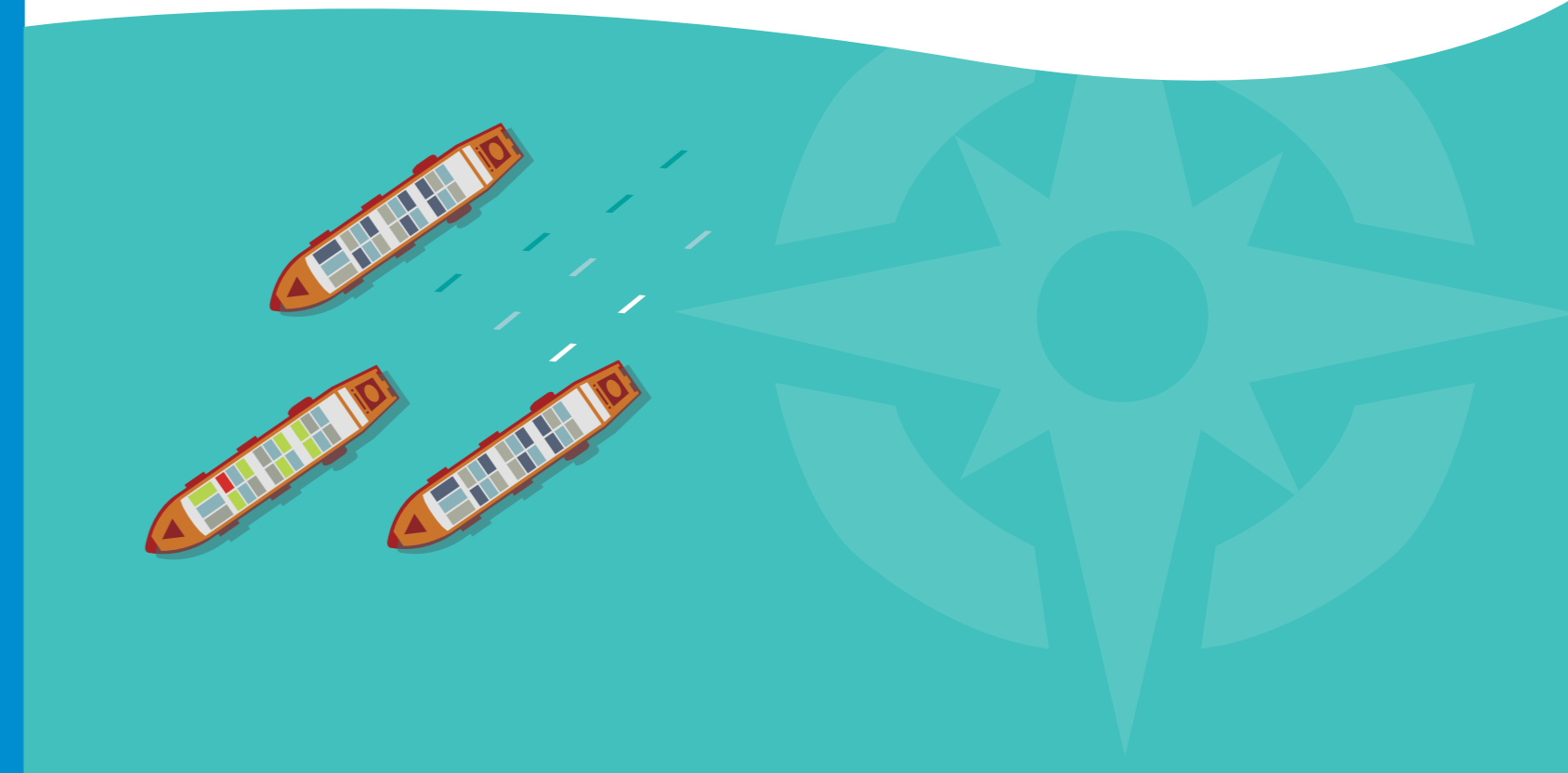
E-mail: [mr\\_service@nabtesco.com](mailto:mr_service@nabtesco.com)

**NABCO** has been renamed **Nabtesco**



## Nabtesco Marine Asia Pacific

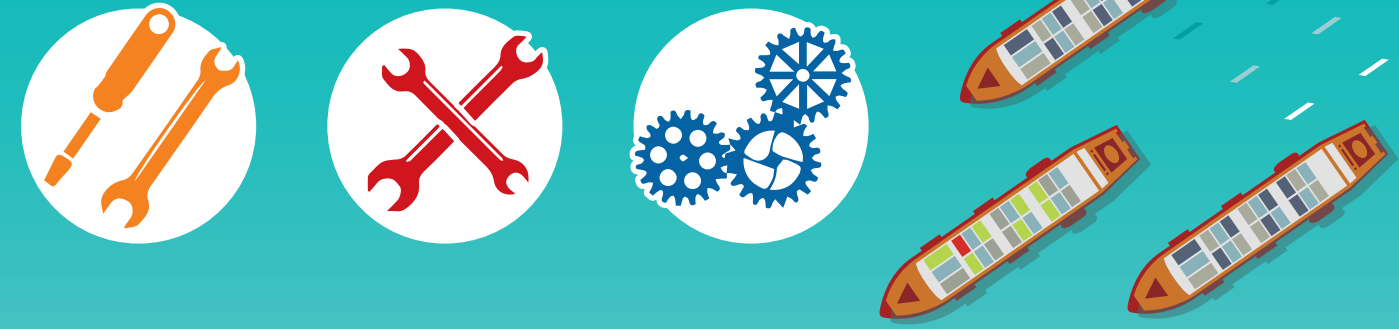
FOR A SAFE AND SMOOTH VOYAGE,  
WHEREVER THE JOURNEY





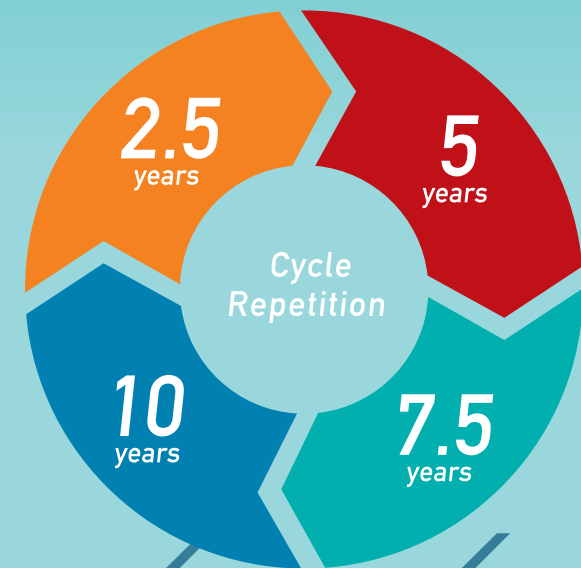
# OPTIMAL PERFORMANCE, MINIMAL COST WITH ACTIVE SHIP MAINTENANCE

Over many years, we at Nabtesco have accumulated a wide range of experience in marine engine control and have realized the importance of "Preventive Maintenance" for maneuvering systems. We provide a variety of basic maintenance programs for each system based on the service period. Upon customer request, other maintenance programs are available besides the basic ones offered.



## RECOMMENDED PERIODICAL MAINTENANCE FOR NABTESCO PRODUCTS

LIFETIME OF VESSELS **MAINTENANCE**  
REPETITION IS KEY FOR SAFE VOYAGES

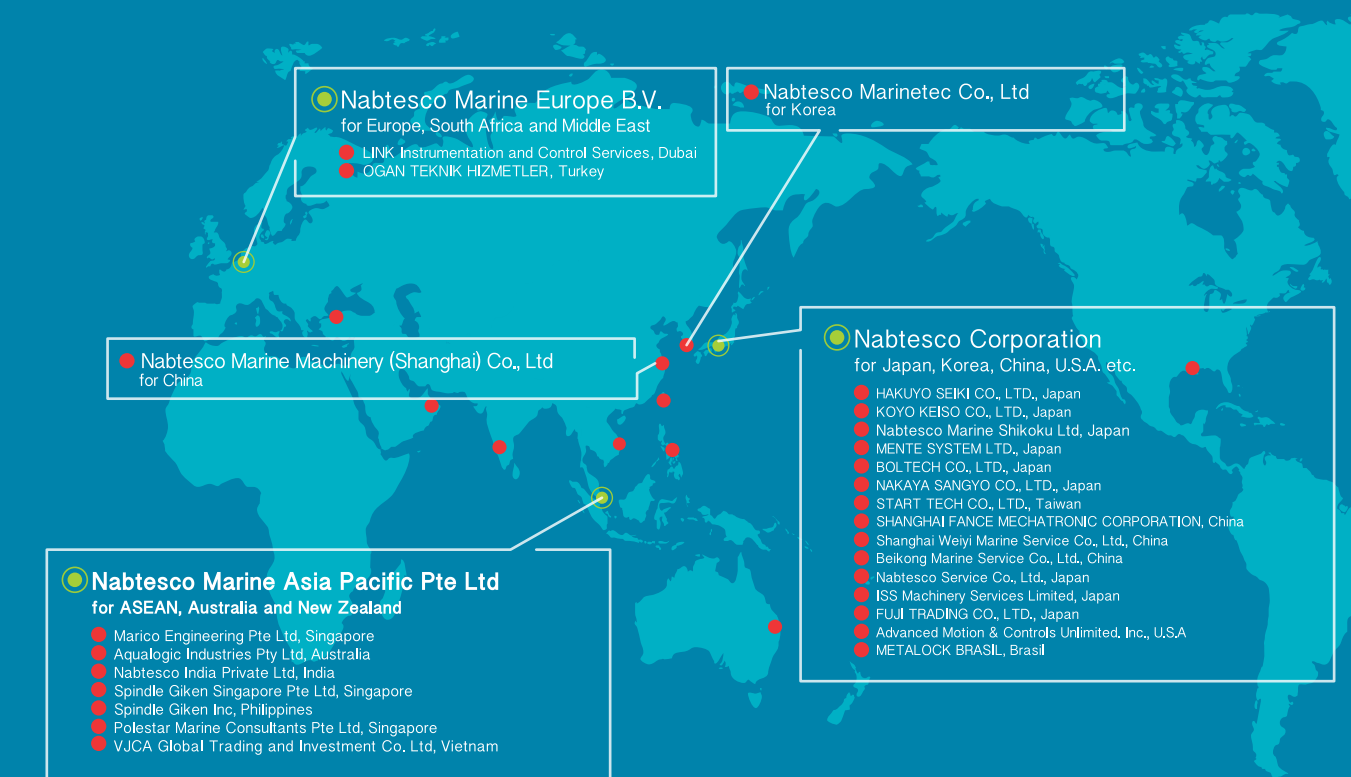


2.5 years	5 years <b>IMPORTANT!!</b>	7.5 years	10 years <b>IMPORTANT!!</b>
Working time / 2 Units	Working time / 6 to 11 Units	Working time / 2 Units	Working time / 10 to 15 Units
<b>BMS</b>	<b>BMS</b>	<b>BMS</b>	<b>BMS</b>
BMS INSPECTION	BMS INSPECTION BMS-I POWER COMPONENTS BMS-II POTENTIOMETERS	BMS INSPECTION	BMS INSPECTION BMS-I POWER COMPONENTS BMS-II POTENTIOMETERS BMS-III ELECTRIC COMPONENTS
<b>GOV</b>	<b>GOV</b>	<b>GOV</b>	<b>GOV</b>
GOV INSPECTION	GOV INSPECTION GOV-I ACTUATOR DRIVER GOV-II ELECTRIC COMPONENTS	GOV INSPECTION	GOV INSPECTION GOV-I ACTUATOR DRIVER GOV-II ELECTRIC COMPONENTS GOV-III ACTUATOR
<b>PMS</b>	<b>PMS</b>	<b>PMS</b>	<b>PMS</b>
PMS-I OVERHAUL HIGH PRESS. VALVES PMS-II OVERHAUL LINE FILTERS	PMS-I OVERHAUL HIGH PRESS. VALVES PMS-II OVERHAUL LINE FILTERS PMS-III OVERHAUL COMMON VALVES	PMS-I OVERHAUL HIGH PRESS. VALVES PMS-II OVERHAUL LINE FILTERS	PMS-I OVERHAUL HIGH PRESS. VALVES PMS-II OVERHAUL LINE FILTERS PMS-III OVERHAUL COMMON VALVES
<b>FIVA</b>		<b>FIVA</b>	
FIVA PILOT VALVE MAIN VALVE		FIVA PILOT VALVE MAIN VALVE	

## Nabtesco GLOBAL SERVICE NETWORK

Nabtesco has global service network consisting of three key centers (Japan, Singapore, and Netherlands) and other centers in eight countries. Skilled engineers provide 24-hour service to support customer's safety navigation.

● Main Service Stations ● Parts & Personnel service station



CONSULT WITH **Nabtesco**  
Marine Asia Pacific