

Multiway Valves Maintenance Solution

FIVA

Fuel Injection Valve Activation

ELFI

Electronic Valve Fuel Injection

ELVA

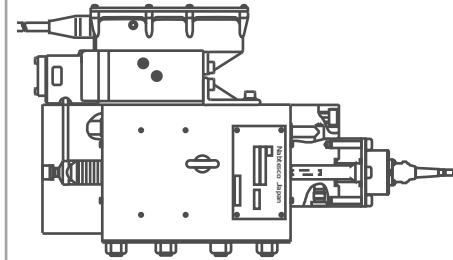
Electronic Valve Activation

A STANDARD MAINTENANCE

- Overhaul + Pilot Valve renewal (All units 5yr routinely)
- Complete renewal - (All units 10yr routinely)

Orig. Serial No.	Test Date	Part Name	Qty	MaintPartNo.	Recommendation (YEARS)	Plan		Latest Maintenance Record					
						Plan	Last Mant Date	1st DATE	2nd DATE	3rd DATE	4th DATE		
SNXXXXXX69	2019/11/11	FIVA I-45 Valve Complete	1	7276287XX	5 10 15 20	☐	☐						
SNXXXXXX70	2019/11/11	FIVA I-45 Valve Complete	1	7276287XX	5 10 15 20	☐	☐						
SNXXXXXX71	2019/11/11	FIVA I-45 Valve Complete	1	7276287XX	5 10 15 20	☐	☐						
SNXXXXXX72	2019/11/11	FIVA I-45 Valve Complete	1	7276287XX	5 10 15 20	☐	☐						
SNXXXXXX73	2019/11/11	FIVA I-45 Valve Complete	1	7276287XX	5 10 15 20	☐	☐						
SNXXXXXX74	2019/11/11	FIVA I-45 Valve Complete	1	7276287XX	5 10 15 20	☐	☐						
SNXXXXXX75	2019/11/11	FIVA I-45 Valve Complete	1	7276287XX	5 10 15 20	☐	☐						

FIVA



B OFF-LAND OVERHAUL

- Service workshops @ Kobe/Japan, Busan/S. Korea, Shanghai/China
- 2~3 Units at ship's running condition



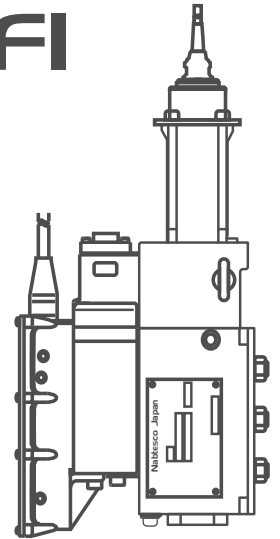
Off-land from Ship



Back in Service

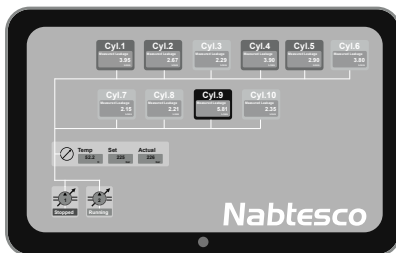
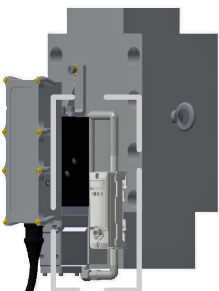


ELFI



C CONDITION BASED MAINTENANCE

- Vessels from 3yr age onwards annual inspection
- Service locations @ Singapore, Japan, Netherlands, S. Korea, China
- 2Men 1Day - 9cylinder units (1~2 Pilot Valves are advised to be prepared)



Pilot Valve Leak Amount result

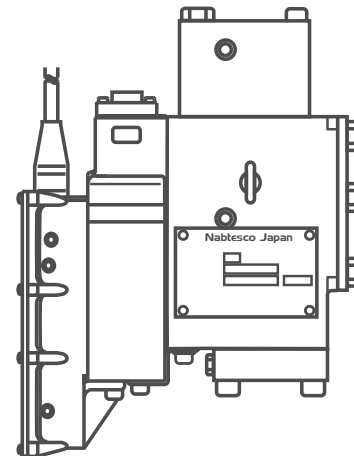
High Leakage amount !!!

Average Leakage amount !!

Low Leakage amount 👍

Leak Check
(Flow rate L/min)

ELVA



*Recommended minimum 2~3 sets of spare onboard.

CONSULT US



(65) 6225 6559 [24/7]



nmap@nabtesco.com.sg



www.nabtesco-marine.com.sg